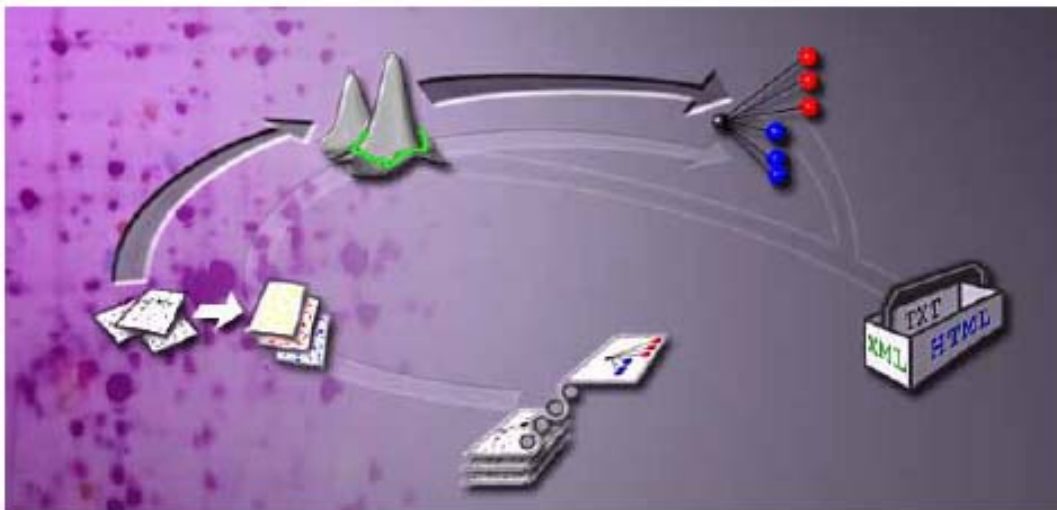


GE Healthcare

# DeCyder 2D 6.5 Patch II

Version 6.5.14.1

Installation Instructions

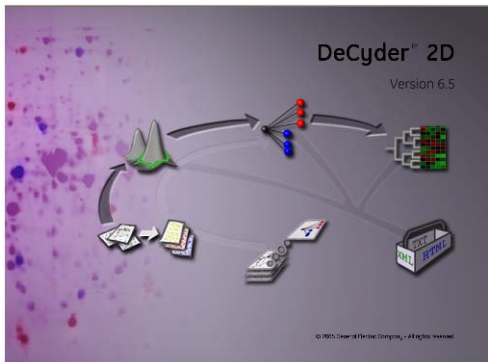


## Installation instructions

Before installing, check that you are administrator on your computer. Perform the installation from DVD or from your hard disk (not from a network).

This patch can be installed on DeCyder™ 2D 6.5 or DeCyder 2D 6.5 updated to patch I.

1. As a safety precaution, perform a full backup of the database according to the instructions in DeCyder 2D Software, Version 6.5 User Manual, page 219.
2. Open the file index.htm



This DVD contains all files necessary to install the DeCyder 2D 6.5 software patch II. (6.5.14.1)

[Installation instruction](#)

[Any use of this software is subject to GE Healthcare Discovery Systems Standard Software End-User License Agreement](#)

[© 2005 General Electric Company - All Rights reserved](#)

## Standalone installation

### 1 DeCyder 2D 6.5 Program Patch II (version 6.5.14.1)

Click on link and select "Open/Run" to execute installation.

### 2 DeCyder 2D 6.5 Database Patch II (version 6.5.14.1)

Click on link and select "Open/Run" to execute installation. Make sure that you are logged in on the computer where the DeCyder Database is installed ('Logged in' means logged in to the computer, not to DeCyder) and click on DeCyder 2D Database Patch II. During the database patch installation you must provide the database password associated with the SYS username.

## Application terminal installation

### 1 DeCyder 2D 6.5 Program Patch II (version 6.5.14.1)

Click on link and select "Open/Run" to execute installation.

## Database server installation

### 1 DeCyder 2D 6.5 Database Patch II (version 6.5.14.1)

Click on link and select "Open/Run" to execute installation. Make sure that you are logged in on the computer where the DeCyder Database is installed ('Logged in' means logged in to the computer, not to DeCyder) and click on DeCyder 2D Database Patch II. During the database patch installation you must provide the database password associated with the SYS username.

### 2 Release notes

Click link to read Release notes

### 3 Adobe Reader

Click link and select "Open/Run" to execute installation

3. Select the appropriate patch type depending on if you have a standalone installation, an application terminal or a database server installation. Read the instructions given for your installation type before installing.

#### 4. Installation of DeCyder 2D 6.5 Program Patch II

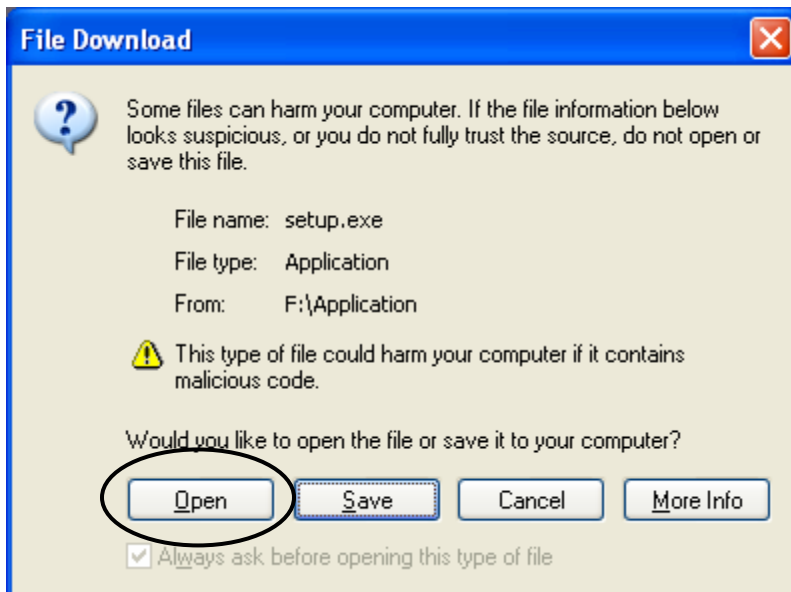
4.1 Click on button  DeCyder 2D 6.5 Program Patch II

4.2. Follow the instructions given during the installation. For details, see installation of DeCyder 2D 6.5 Program in the Installation Guide.

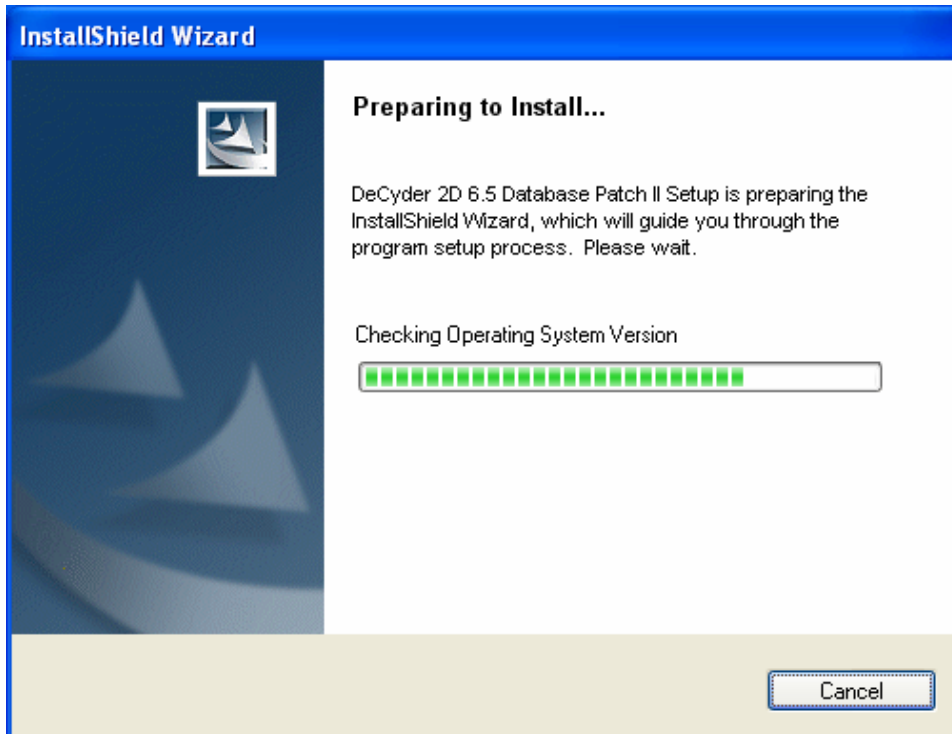
#### 5. Installation of DeCyder 2D 6.5 Database Patch II

5.1. Click on button  DeCyder 2D 6.5 Database Patch II

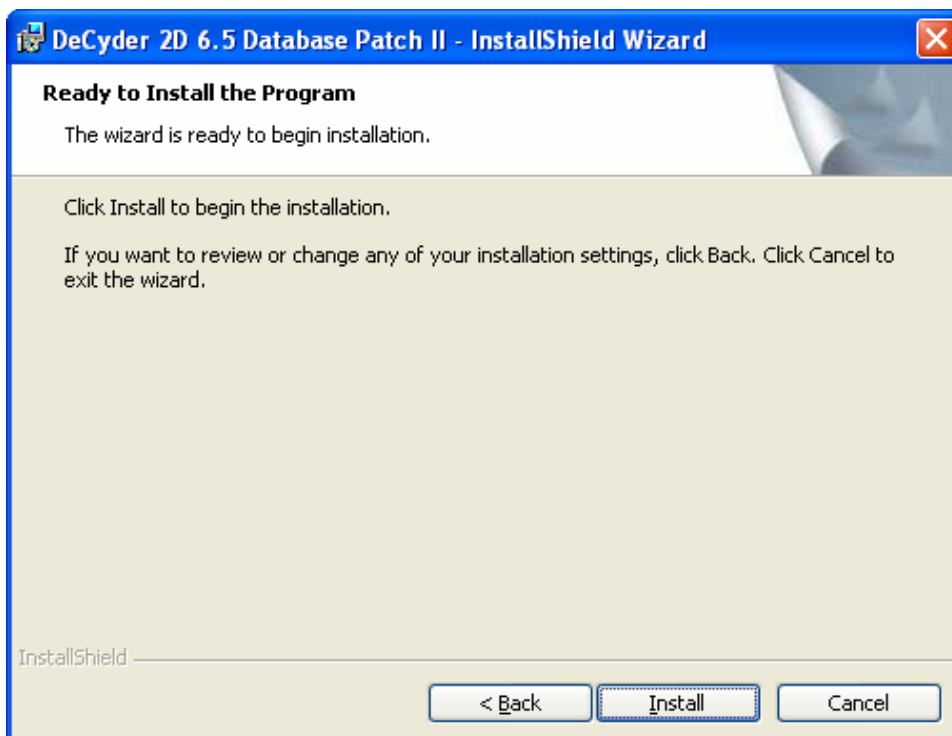
5.2 Select **Open/Run**.



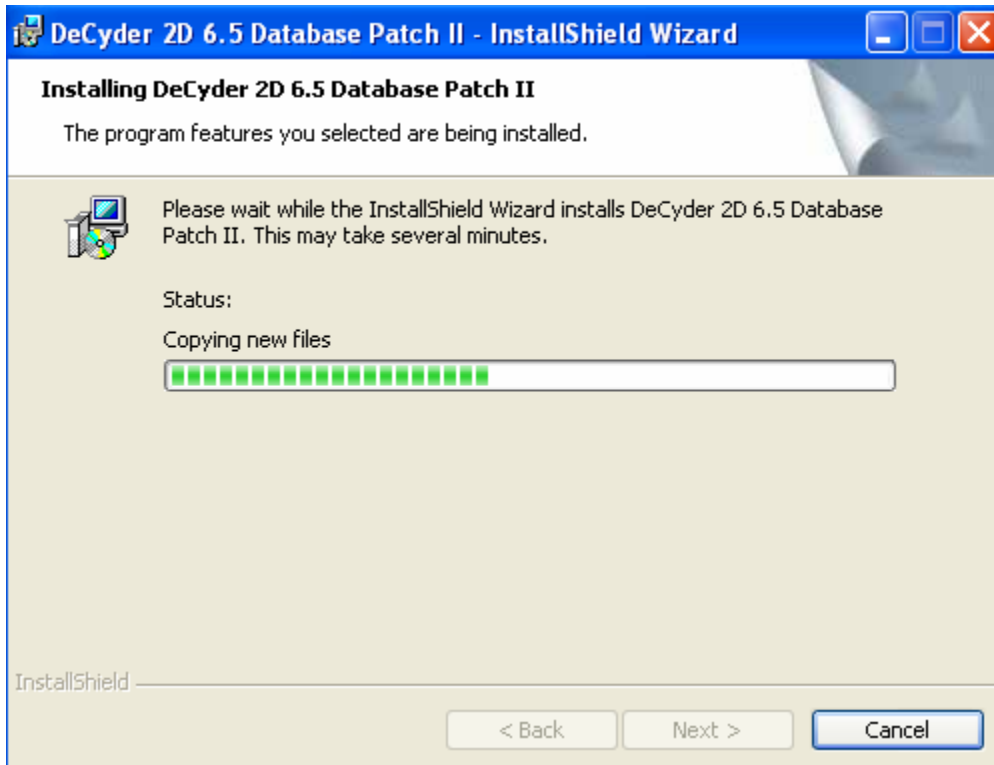
5.3. Wait for preparation to complete and for the next dialog to be shown.



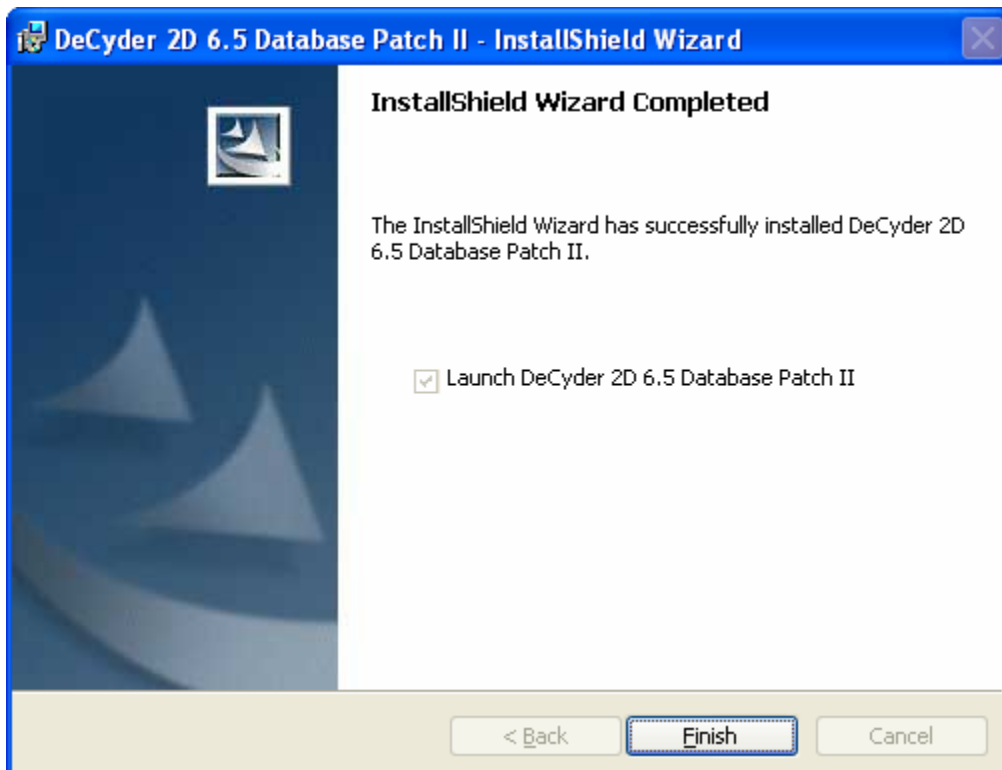
5.4. Click **Install** to continue.



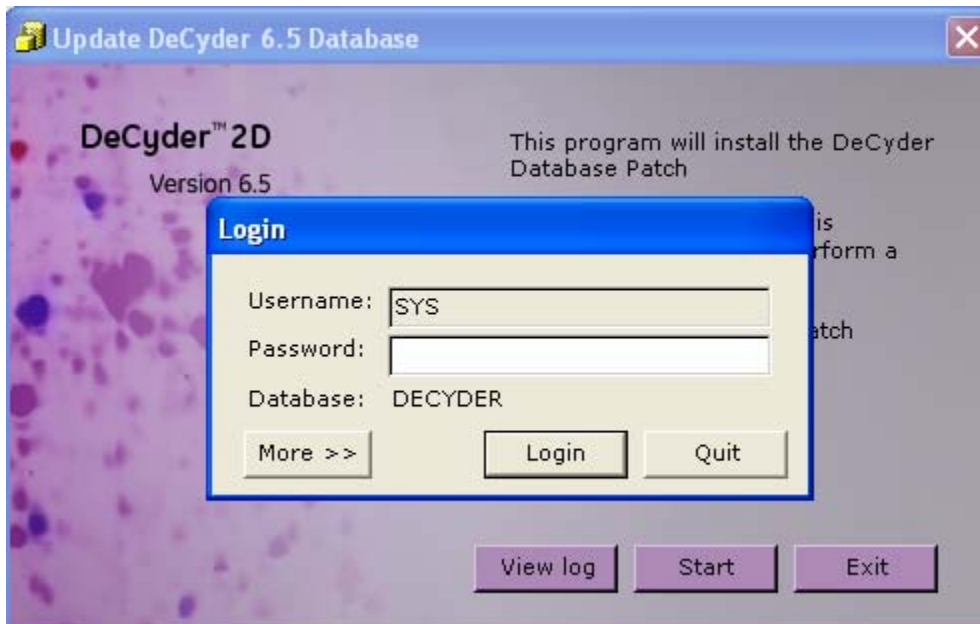
5.5. Installation is in progress. Please wait.



5.6. Click Finish.

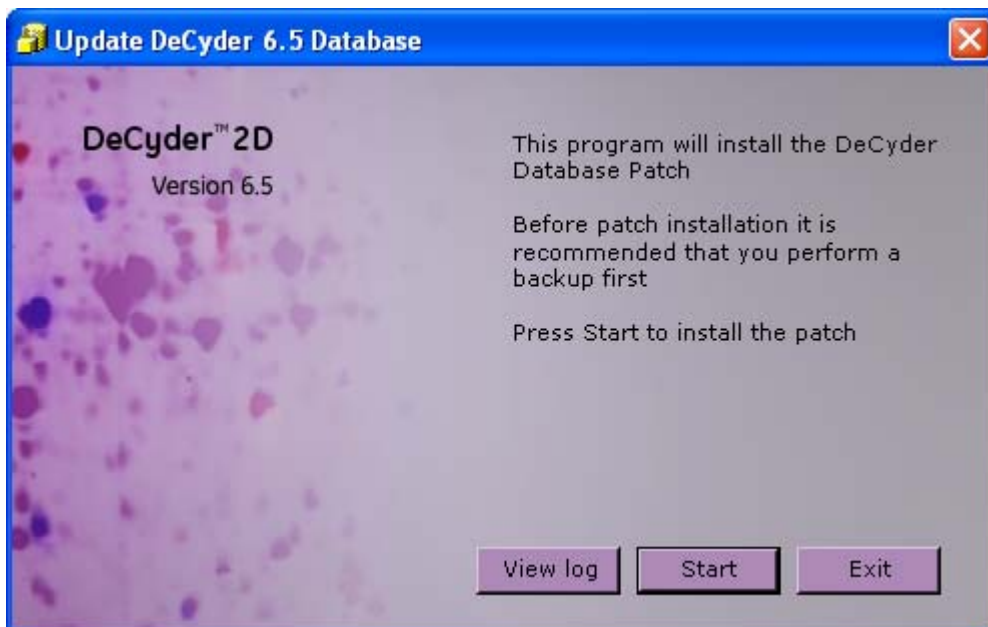


5.7. Login using the password set at the original installation of the database where **admin** was the recommended password.

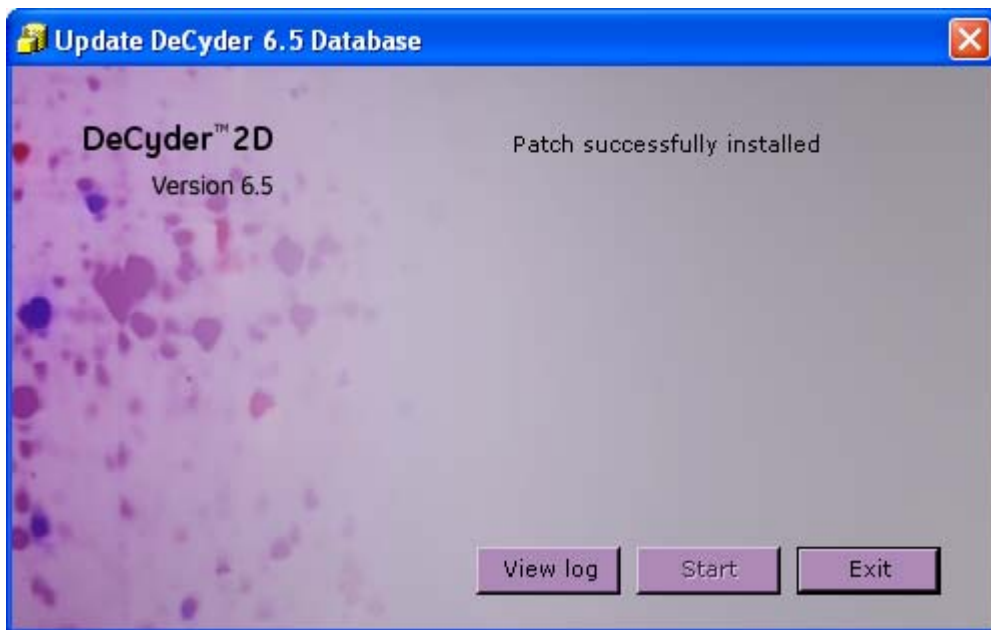


*Note! If the installation is interrupted by clicking Quit in this dialog or Exit in the next dialog "DeCyder 2D 6.5 Database Patch II" has to be removed using Add or Remove Programs in the Control Panel. The database patch installation has then to be performed from paragraph 5.1 again.*

5.8. Click start.



5.9. Installation is complete. Click Exit.



6. Repeat the procedure on all computers with DeCyder 6.5 installed.

[www.gehealthcare.com](http://www.gehealthcare.com)

GE Healthcare Bio-Sciences AB  
Björkgatan 30  
751 84 Uppsala  
Sweden

Cy and DeCyder are trademarks of GE Healthcare companies. GE, imagination at work, and GE monogram are trademarks of General Electric Company.

Windows is a trademark of Microsoft Corp.

All goods and services are sold subject to the terms and conditions of sale of the company within GE Healthcare which supplies them. GE Healthcare reserves the right, subject to any regulatory and contractual approval, if required, to make changes in specifications and features shown herein, or discontinue the product described at any time without notice or obligation. Contact your local GE Healthcare representative for the most current information.

DeCyder. Any use of this software is subject to GE Healthcare Standard Software End-User License Agreement for Life Sciences Software Products.

GE Healthcare Bio-Sciences AB, a General Electric Company.

© 2005 General Electric Company – All rights reserved.

GE Healthcare Bio-Sciences AB  
Björkgatan 30, 751 84 Uppsala, Sweden

GE Healthcare Europe GmbH  
Munzinger Strasse 5, D-79111 Freiburg, Germany

GE Healthcare UK Ltd  
Amersham Place, Little Chalfont, Buckinghamshire, HP7 9NA, UK

GE Healthcare Bio-Sciences Corp  
800 Centennial Avenue, P.O. Box 1327, Piscataway, NJ 08855-1327, USA

GE Healthcare Bio-Sciences KK  
Sanken Bldg. 3-25-1, Hyakunincho, Shinjuku-ku,  
Tokyo 169-0073, Japan

Asia Pacific Tel +65 6275 1830 Fax +65 6275 1829 • Australasia Tel + 61 2 9899 0999 Fax +61 2 9899 7511 • Austria Tel 01/57606-1619 Fax 01/57606-1627 • Belgium Tel 0800 73 888 Fax 02 416 82 06 • Canada Tel 800 463 5800 Fax 800 567 1008 • Central, East, & South East Europe Tel +43 1 972720 Fax +43 1 97272 2750 • Denmark Tel 45 16 2400 Fax 45 16 2424 • Finland & Baltics Tel +358 (0)9 512 39 40 Fax +358 (0)9 512 39 439 • France Tel 01 69 35 67 00 Fax 01 69 41 96 77 Germany Tel: 089 96281 660 Fax 089 96281 620 • Greater China Tel +852 2100 6300 Fax +852 2100 6338 • Italy Tel 02 27322 1 Fax 02 27302 212 • Japan Tel +81 3 5331 9336 Fax +81 3 5331 9370 • Latin America Tel +55 11 3933 7300 Fax +55 11 3933 7304 • Middle East & Africa Tel +30 210 9600 687 Fax +30 210 9600 693 • Netherlands Tel 0800 82 82 82 1 Fax 0800 82 82 82 4 • Norway Tel 815 65 555 Fax 815 65 666 • Portugal Tel 21 417 7035 Fax 21 417 3184 • Russia & other C.I.S. & N.I.S Tel +7 (495) 956 5177 Fax +7 (495) 956 5176 • Spain Tel 93 594 49 50 Fax 93 594 49 55 • Sweden Tel 018 612 1900 Fax 018 612 1910 • Switzerland Tel 0848 8028 12 Fax 0848 8028 13 • UK Tel 0800 616928 Fax 0800 616927 • USA Tel 800 526 3593 Fax 877 295 8102



imagination at work